



BEYOND

BY *Fridcorp*™





**DEFINE
YOUR
DESTINY**

A VISIONARY MASTERPLAN



BEYOND IMAGINATION

An extraordinary new precinct in Hurstville where sculpted towers rise around a central plaza, and elegant one, two and three bedroom apartments sit above vibrant retail and dining.



Beautiful living and urban convenience come together in one amazing place, where landscaped laneways and gardens connect residents to a vibrant retail plaza and Kempt Field.



A modern building with white, curved balconies overlooking a green landscape at sunset. The building's facade is composed of white, curved balconies that create a rhythmic pattern. The balconies are set against a backdrop of large windows that reflect the warm light of the setting sun. The landscape below is lush with green trees and a clear sky with scattered clouds. The sun is low on the horizon, casting a golden glow over the entire scene.

**“WE DRAW INSPIRATION
FROM AROUND THE WORLD TO
CREATE BUILDINGS THAT INSPIRE
BEYOND IMAGINATION.”**

Paul Fridman, Fridcorp

THE LOCATION



NORTH SYDNEY
35 mins

SYDNEY CBD
25 mins

UTS UNIVERSITY
25 mins

SYDNEY AIRPORT
15 mins

BRIGHTON LE SANDS
12 mins

BEYOND
by Fridcorp

WESTFIELD HURSTVILLE
430 METRES

HURSTVILLE STATION
650 METRES

ALLAWAH STATION
250 METRES

A VIBRANT PLACE TO BE

*Hurstville is the integral heart of a diverse community.
A celebration of different cultures and flavours.*





HURSTVILLE



SUNNY HARBOUR YUM CHA



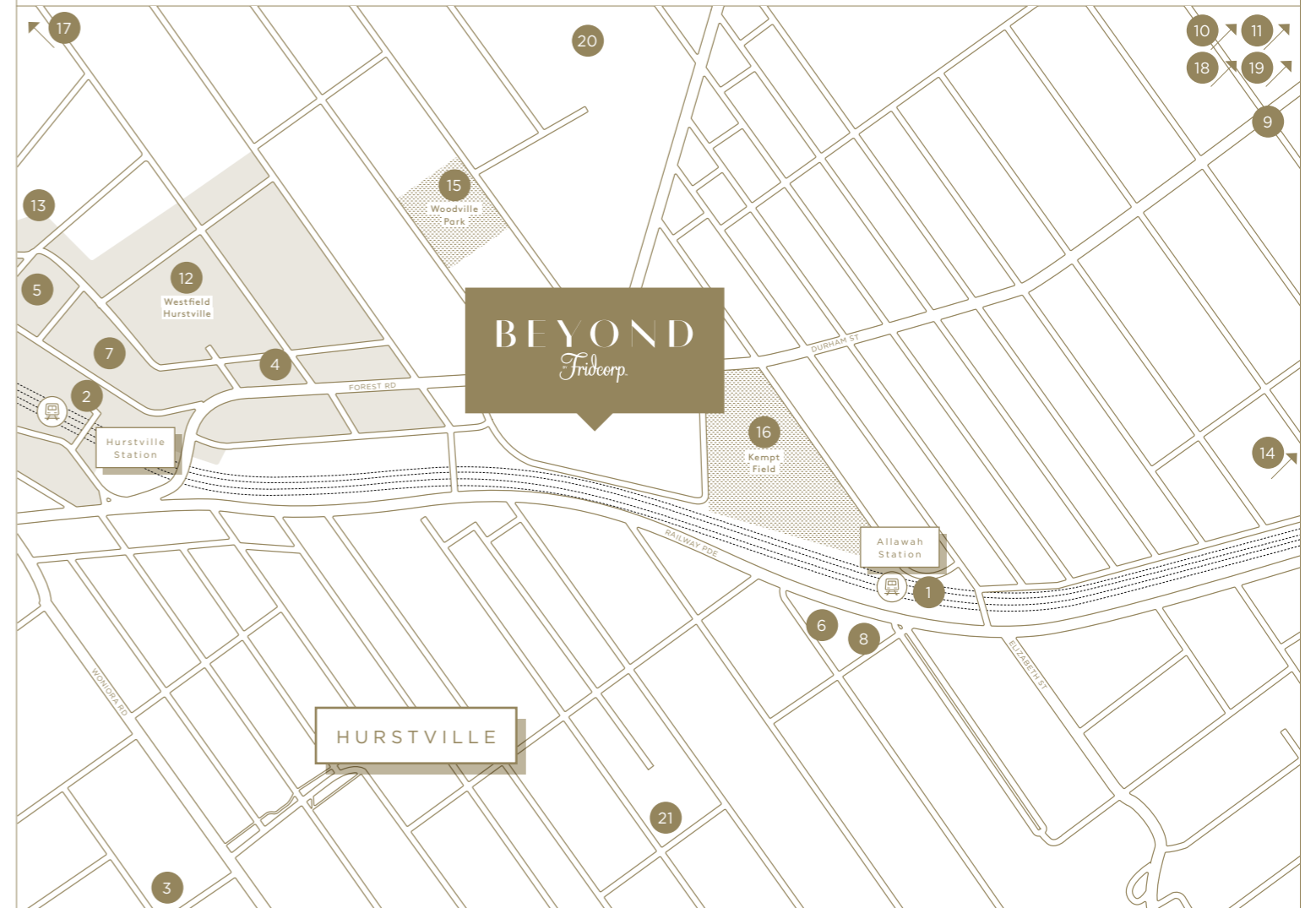
WESTFIELD HURSTVILLE

DIVERSE FLAVOURS

*A wealth of dining and shopping is waiting to be discovered,
a melting pot of Asian and international cuisine.*



HURSTVILLE



A truly connected suburb, Hurstville revels in its close proximity to the Sydney CBD, only 25 minutes by train and a stone's throw away from Westfield Hurstville, restaurants, parks and schools.

TRANSPORT

1. Allawah Train Station
2. Hurstville Train Station

CAFE & DINING

3. Oregano Bakery
4. Hurstville Chinese Restaurant
5. Sunny Harbour Yum Cha
6. Viking Gourmet Pizza
7. Hurstville Growers Market
8. Allawah Hotel
9. Signature Brasserie

ARTS & CULTURE

10. MCA
11. AGNSW

RETAIL

12. Westfield Hurstville

HOSPITALS

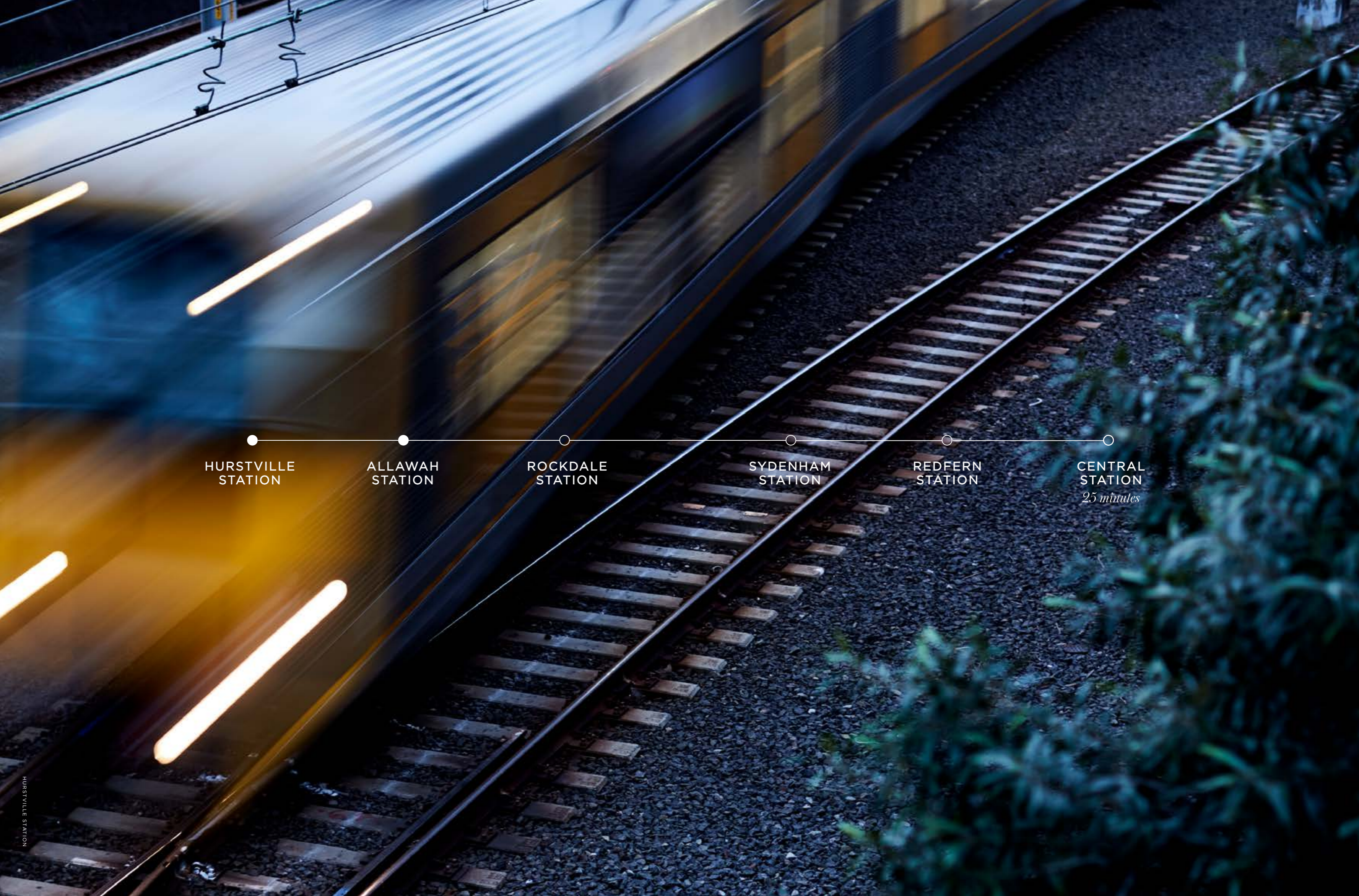
13. Hurstville Private Hospital

PARKS & BEACHES

14. Brighton Le Sands Beach
15. Woodville Park
16. Kempt Field
17. Hurstville Oval

EDUCATION

18. Sydney University
19. UTS
20. Georges River College
21. St George Christian School



HURSTVILLE
STATION

ALLAWAH
STATION

ROCKDALE
STATION

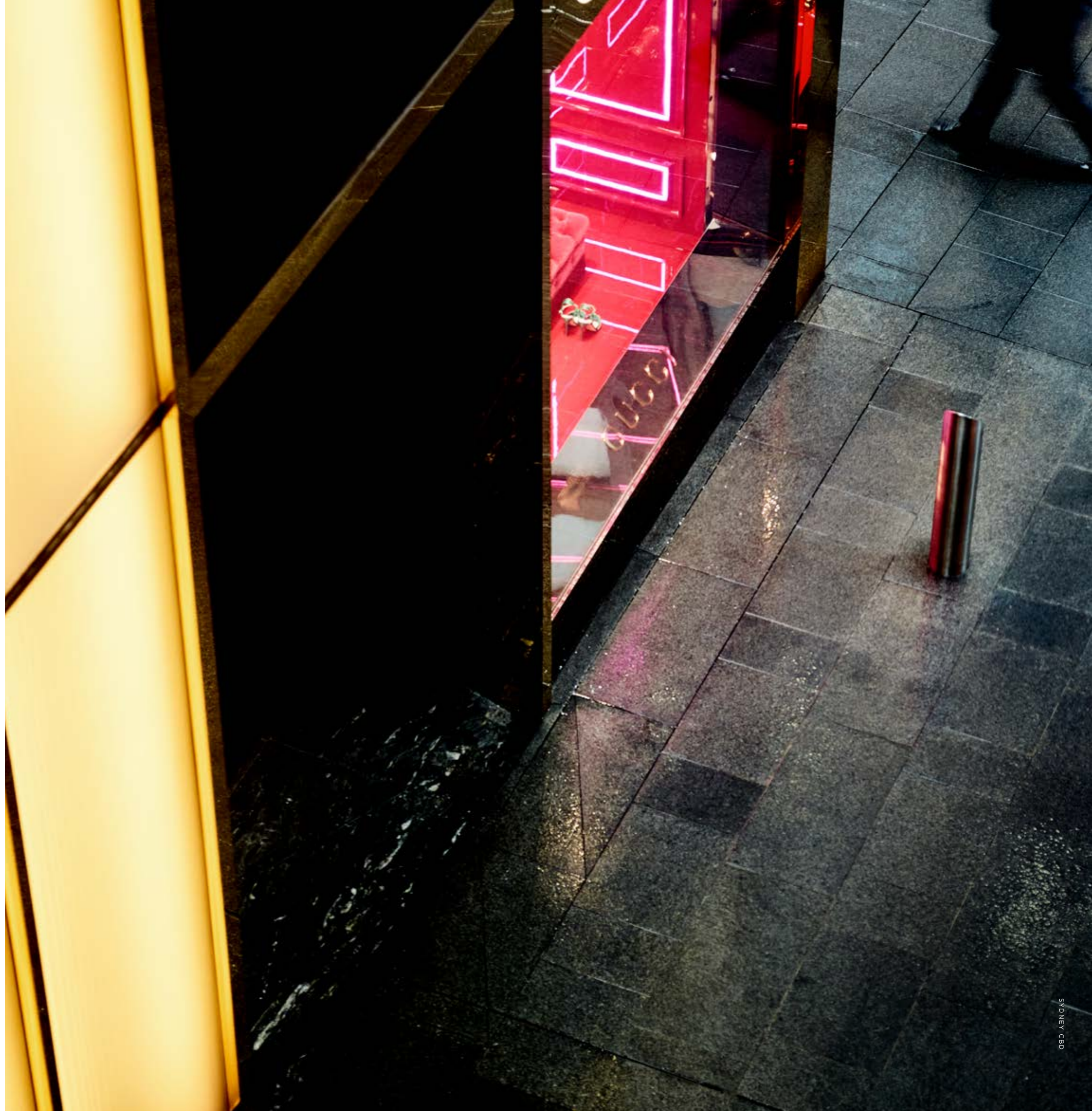
SYDENHAM
STATION

REDFERN
STATION

CENTRAL
STATION
25 minutes

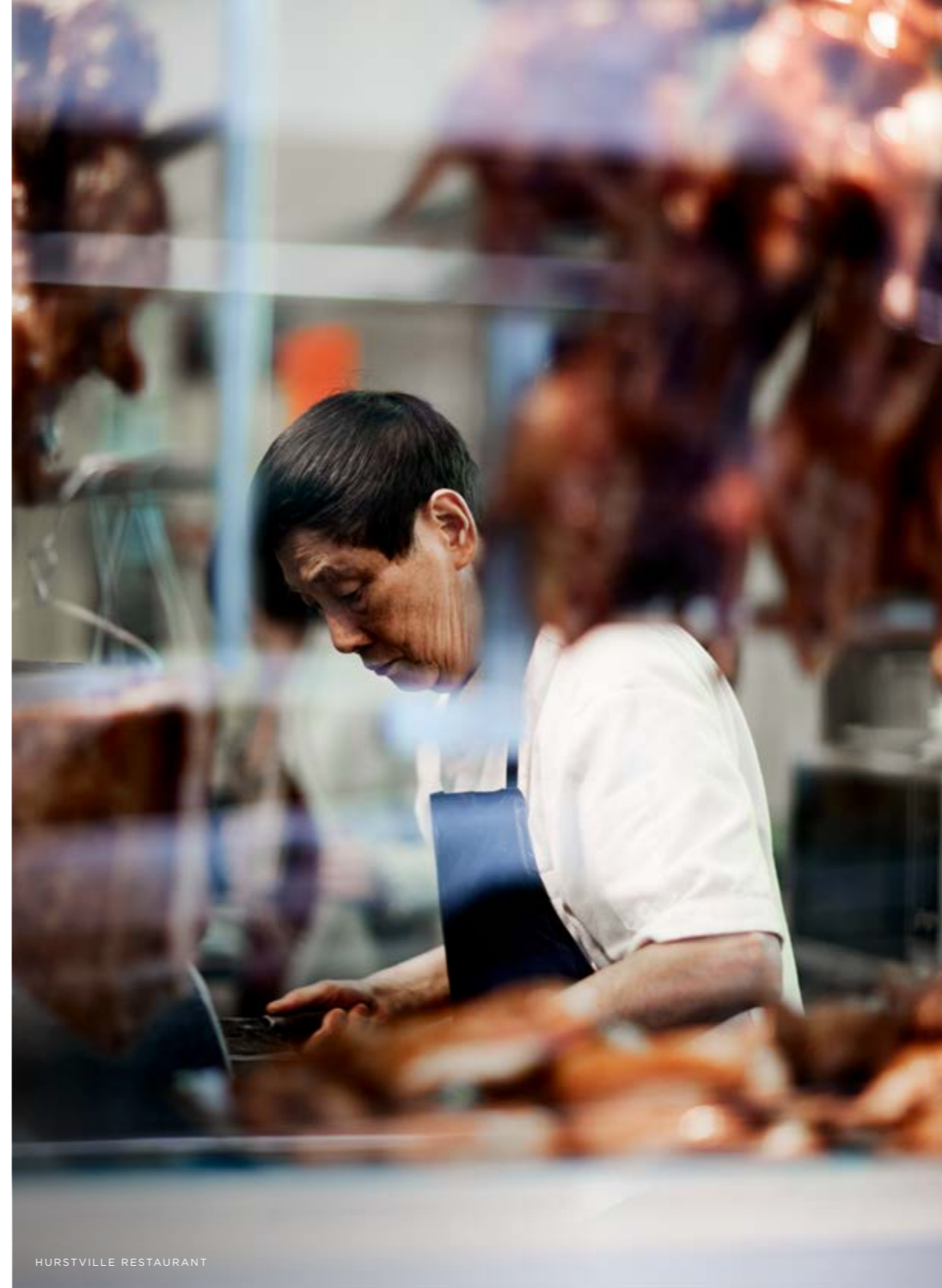
WELL CONNECTED

26 *Be where you want to be in a heartbeat. With Hurstville and Allawah Stations minutes from your doorstep, the Sydney CBD is only a short train ride away.*

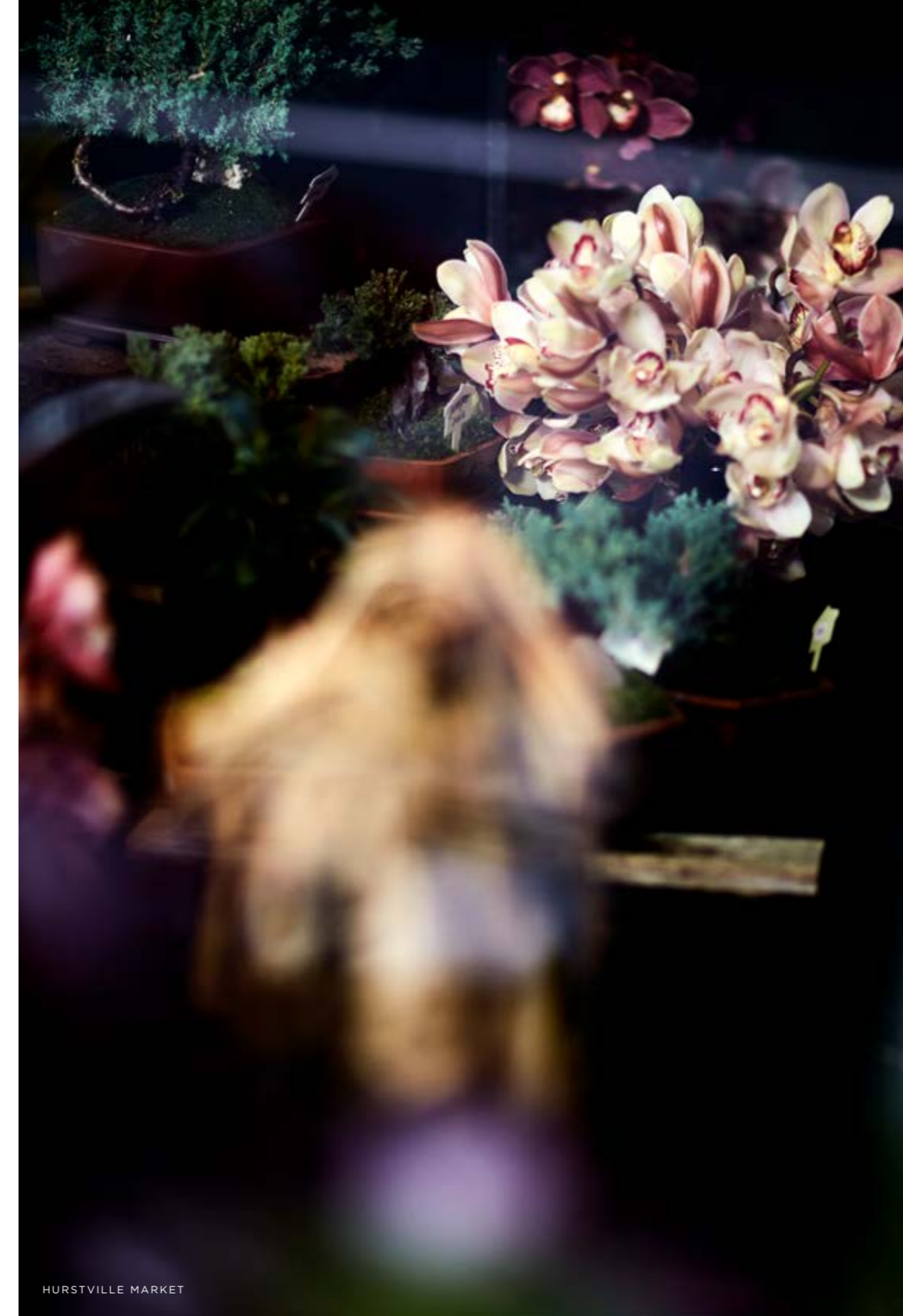




HURSTVILLE MARKET



HURSTVILLE RESTAURANT



HURSTVILLE MARKET

A CULTURAL FUSION

Hurstville is where modern shopping centres meet charming fresh food markets, a colourful destination to thrill and delight.



INNER URBAN SANCTUARY

Calm your senses at the adjacent Kempt Field, where birds serenade in tranquil green spaces.

THE ARCHITECTURE

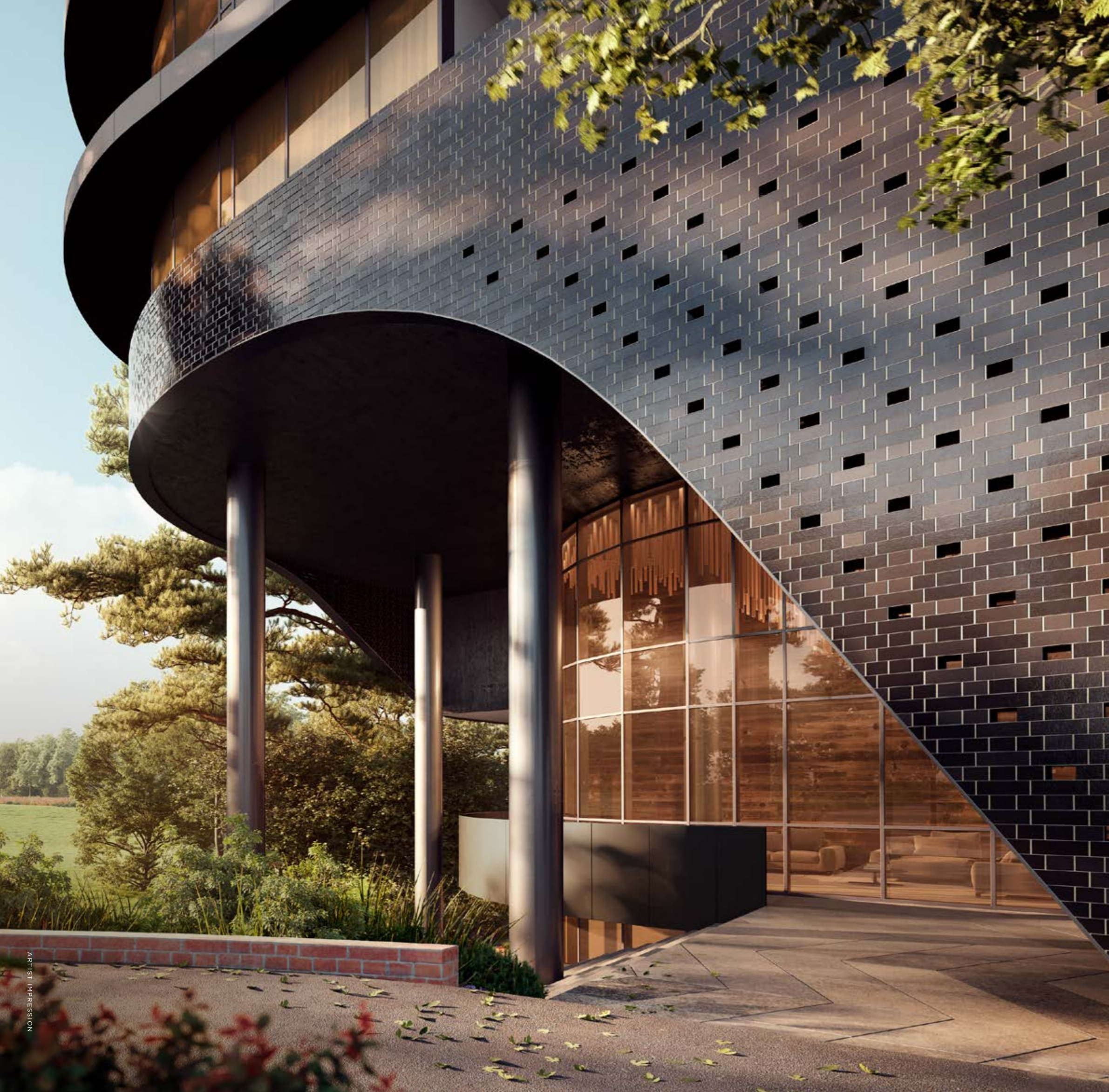


LIFE WILL
NEVER
BE THE SAME



SCULPTED ELEGANCE

Beautiful sculptural elements express a refined and restrained palette. Sweeping and sensuous curves make a bold architectural statement.



**“LAYERED TEXTURES AND
BRICKWORK IMBUE WARMTH
AND CHARACTER, WHILE
LUSH LANDSCAPING BRINGS
THE SQUARE TO LIFE.”**

DKO

*A retail destination for residents and visitors,
the plaza has been designed with a tactile
approach, creating a real sense of place.*

*Bask in spectacular views towards
Botany Bay.*





*To the northeast, look out to panoramas
of the Sydney CBD.*

Oscar Wilde

“
**I HAVE THE
SIMPLEST
TASTES.
I AM ALWAYS
SATISFIED
WITH THE BEST.**
”



ARTIST IMPRESSION — DARK SCHEME

LUXURY OF SPACE

Each residence exudes uncompromised quality from every aspect. One, two and three bedroom apartments offer considered and light-filled interiors. With wide frontages and a high level of amenity, each apartment celebrates a refined, contemporary aesthetic.



*Marrying beauty with function,
custom joinery defines elegant spaces with
generous storage, embellished by brushed
gold fittings of the finest quality.*







**“BESPOKE TAPWARE,
LUXURIOUS BATHS, BASINS
AND VANITIES WERE
SPECIALLY DESIGNED
FOR BEYOND.”**

Woods Bagot





Elegant bathrooms display beautiful craftsmanship, featuring fine details custom made to the highest standards.



Your private sanctuary is bathed in natural light, exuding comfort and luxury. Built-in robes offer ample storage.

RETAIL AND AMENITY





ARTIST IMPRESSION

ELEVATE YOUR LIFESTYLE

For health and fitness, entertaining or quiet contemplation, residents enjoy exclusive access to Beyond's amenity levels. Located across two podium platforms, a yoga and meditation retreat, BBQ and dining areas sit among lush elevated gardens.

FROM DAWN TO DUSK

The retail plaza will live and breathe, taking on a life of its own. Bustling with activity, a Woolworths, cafes, restaurants and boutique retail welcome shoppers throughout the day, while residents gather at nightfall to dine and unwind.



PROJECT TEAM

Avenue.

By *Fridcorp*TM



“
**WE SEEK OUT
THE UNIQUE
AND THE BRAVE.
PEOPLE FOR
WHOM PASSION
IS A WAY OF LIFE.**
”

Paul Fridman



Fridcorp is known for its quality, integrity, culture and celebration of the surrounding neighbourhood. With Beyond, its successful journey continues.

Fridcorp is Australia's most design-focused property developer. Its passion is evident in each of its projects, as it responds to the needs of today's buyers in collaboration with leading architects, interior designers and artists.



ELM

South Melbourne / Melbourne

Elm's location beside the renowned St Kilda Road boulevard epitomises what visitors and Melburnians love about the city: beautiful gardens and great cafés, restaurants and fashion boutiques on their doorstep. The landmark development has brought together some of Australia's best creative talents including architects Elenberg Fraser, interior designers Hecker Guthrie and landscape architect Jack Merlo.

LILLI

South Yarra / Melbourne

True to Fridcorp's signature style, Lilli offers beautifully crafted, attainable living and boutique office spaces in one of Melbourne's most affluent and tightly held inner city locations. Designed by Hecker Guthrie and Elenberg Fraser, Lilli's unique living, work and retail spaces form part of a bustling hub reminiscent of Melbourne's laneway culture, connecting Chapel Street with South Yarra Station.

AVENUE

South Yarra / Melbourne

Prominently positioned on the corner of Chapel St and Alexandra Avenue, Avenue Apartments boast uninterrupted city and Yarra River views. A statement of attainable luxury, its classic interiors reflect a Scandinavian palette, with custom designed joinery and quality appliances. True to Fridcorp tradition, Avenue delivers intelligent design, individuality and modern day living.

EVE

Erskineville / Sydney

Eve further reinforces Fridcorp's reputation for luxury designer apartments at affordable prices in Sydney. Well-established and highly progressive, Fridcorp has built its success on an inseparable combination of design, quality and integrity.

Fridcorp™



Woods Bagot is an international architectural and consulting practice across a wide variety of disciplines. Founded in Australia with a history spanning over a hundred years, Woods Bagot has established studios in Asia, Australia, Europe, the Middle East and North America.

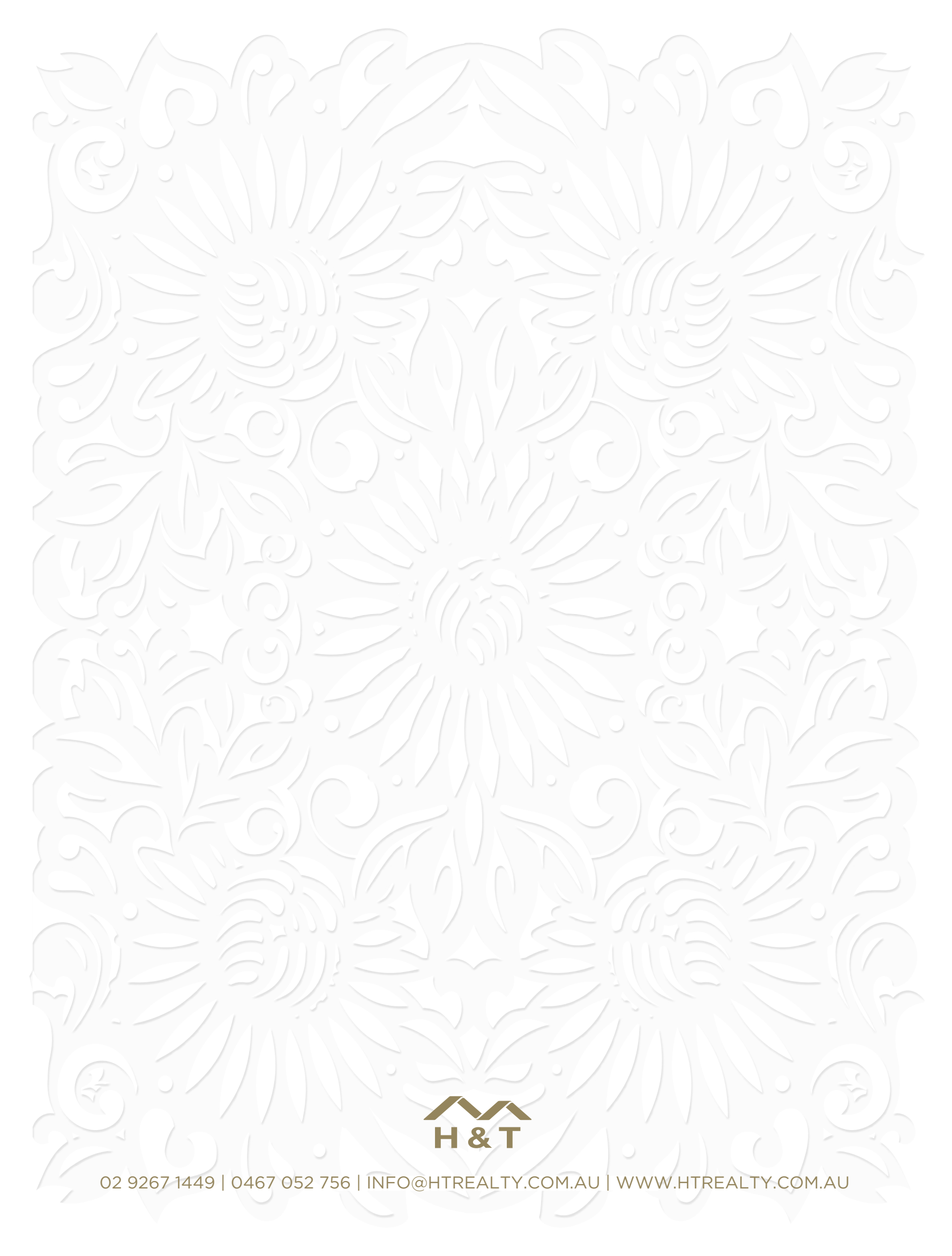


DKO Architecture is one of Australia's leading innovative design practices specialising in Masterplanning, Urban Design, Architecture and Interior Design with a particular focus on the design and delivery of residential developments.

DKO is passionate about developing innovative solutions that respond to the richness, complexity and diversity of the Australian lifestyle. It has vast experience in delivering affordable solutions through clever and resolved design.



The information contained in this promotional material is for illustration purposes only and is subject to change. Statements, figures, calculations, plans, images and representations are indicative only. Images may include artists impressions and computer generated images. Changes may be made during the further planning or development stages of any development and dimensions, fittings, finishes, ongoing costs and specifications and representations are subject to change without notice. Whilst all reasonable care has been taken in providing this information the developer and its related companies and their representatives, consultants and agents accept no responsibility for the accuracy of any information contained herein or for any action taken in reliance thereon by any party whether purchaser potential purchaser or otherwise. Prospective purchasers must make their own enquiries to satisfy themselves as to all aspects of any Fridcorp project and further should seek independent legal and financial advice in relation to all of the information contained herein. The information contained in this material is a guide only and does not constitute an offer, inducement, representation, warranty or contract.



02 9267 1449 | 0467 052 756 | INFO@HTREALTY.COM.AU | WWW.HTREALTY.COM.AU